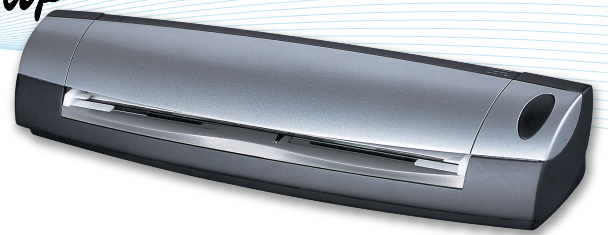


Scanshell® 3100D Duplex



Duplex Scanner

Scanshell® 3100D is a high-speed duplex document scanner which offers simultaneous high image quality capture of both sides of the scanned document.

The **Scanshell® 3100D** is equipped with high speed USB 2.0 standard interface and requires no external power supply.

With its light weight, small footprint and simple connection, the **Scanshell® 3100D** is a unique and convenient solution for simultaneous double side scanning for both desktop and mobile use.

Scanner Specification

Interface:	USB 2.0 (Universal Serial Bus) High speed
Image sensor:	Dual Color CMOS, Two sided
Optical Resolution:	600 dpi
Imaging Standard:	Windows (WIA-STI) and TWAIN 1.9
Power Consumption:	Full USB powered; 0.2W Stand-by, 2.0W Scanning
Scanning Area:	A4, Maximum 8.5" x 14" (216mm x 356mm) legal page
Scan Speed:	6 pages per minute B&W 3 pages per minutes Color
Scan Modes:	Color, Greyscale, Black & White.
Media Thickness:	0.1mm - 1.2mm
Paper Sensor:	Electro- mechanical
Regulatory/Safe approvals:	CE, FCC- Class B, RoHS, WEEE

Features

- **Full USB powered.** USB 2.0 interface, no external power required
- Control over resolution settings
- from 75dpi to 600dpi
- Scans up to 8.5" wide and 14.0" long
- Light-weight and fully portable
- Small footprint
- **Twain** and **WIA** compatible

Dimensions

- L x W x H:
12.25" x 2.46" x 2"
- Weight:
21 oz/588 gr

Platform Compatibility

- Windows 7, Vista, XP (64 & 32 bit)